

# Reflex type level gauge

## Model : L100 series

Spec. sheet no. LD01-01



### Description

Reflex liquid level gauge has a sturdily constructed body, with the glass and cover securely held by U-bolts to maintain a hermetic seal (see figure below). This type of level gauge features several parallel grooves cut into the glass surface that is in contact with the liquid. The resulting prismatic diffraction causes to appear white by reflection : liquids black by absorption thus the level of even transparent liquids can be clearly observed.

Low-medium and high-pressure type may be used according to application conditions and units may be manufactured using carbon steel, stainless steel or a wide variety of other materials for parts in contact with the liquid. Type L100 reflex gauges have a number of further advantages including light weight, availability of long visible lengths and low price.

### Type



General type (Max. 4MPa)



High pressure type (Max. 24MPa)

### Specification

#### Material

Carbon steel  
LTCS  
Stainless steel  
A182-F11, 22, 5, 9, 91 and Monel  
Titanium  
Hastelloy  
Alloy-20, etc.

#### Visible length

90 ~ 3,510 mm

#### Max. No. of section

10 sections

#### Vessel connection

3/4" or 1" flanged ANSI 150 ~ 2,500 Lb

#### Option

- Scale plate
  - Unit : Centimeter, Meter
- Vent
  - Needle valve
  - Gate valve
  - Globe valve
  - Nipple and cap
- Drain
  - Needle valve
  - Gate valve
  - Globe valve
  - Nipple and cap
- Bracket
  - Longer than 3,000 mm of C to C

**1. Base model**

- L100** Reflex level gauge  
**L110** Large chamber type reflex level gauge  
**L120** Zig-zag type reflex level gauge

**2. Vessel connection size**

ANSI		JIS	
<b>AA</b>	½" 150 Lb RF	<b>JA</b>	15A 10K RF
<b>AB</b>	½" 300 Lb RF	<b>JB</b>	15A 20K RF
<b>AC</b>	½" 600 Lb RF	<b>JC</b>	15A 30K RF
<b>AD</b>	¾" 150 Lb RF	<b>JD</b>	20A 10K RF
<b>AE</b>	¾" 300 Lb RF	<b>JE</b>	20A 20K RF
<b>AF</b>	¾" 600 Lb RF	<b>JF</b>	30A 30K RF
<b>AG</b>	1" 150 Lb RF	<b>JG</b>	25A 10K RF
<b>AH</b>	1" 300 Lb RF	<b>JH</b>	25A 20K RF
<b>AI</b>	1" 600 Lb RF	<b>JI</b>	25A 30K RF
<b>AJ</b>	1½" 150 Lb RF	<b>JJ</b>	40A 10K RF
<b>AK</b>	1½" 300 Lb RF	<b>JK</b>	40A 20K RF
<b>AL</b>	1½" 600 Lb RF	<b>JL</b>	40A 30K RF
<b>AM</b>	2" 150 Lb RF	<b>JM</b>	50A 10K RF
<b>AN</b>	2" 300 Lb RF	<b>JN</b>	50A 20K RF
<b>AO</b>	2" 600 Lb RF	<b>JO</b>	50A 30K RF
<b>AP</b>	½" NPT	<b>JP</b>	½" PT
<b>AQ</b>	¾" NPT	<b>JQ</b>	¾" PT
<b>OH</b>	Other		

**3. Vessel connection type**

- A** Flanged  
**B** Union and screwed  
**O** Other

**4. Hook-up**

- B** Top and bottom  
**L** Side and side (Left)  
**R** Side and side (Right)  
**O** Other

**5. Gauge connection**

- G** Gland  
**U** Union  
**S** Screwed  
**O** Other

**6. Gauge valve**

- S** Straight  
**O** Off-set  
**N** None

**7. Center to center (mm)**

**XXXX**

**8. Chamber material**

- CS** Body - Carbon steel / Cover - Carbon steel  
**SS** Body - 304SS / Cover - 304SS  
**ZZ** Other

**9. Drain end**

- D** Dust-proof cap inserted  
**P** With plug  
**O** Other

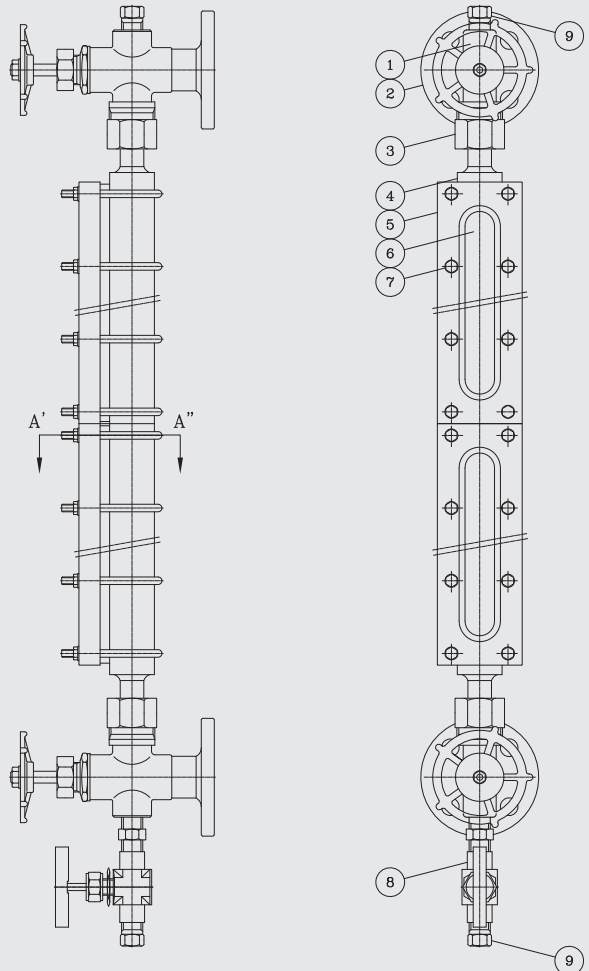
**10. Option**

- SP** Scale plate  
**LN** Lining  
**JK** Jacketing  
**NF** Non-frosting  
**OH** Other  
**NA** None

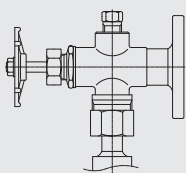
1	2	3	4	5	6	7	8	9	10
L100	AE	A	B	S	O	XXXX	CS	D	SP

Sample ordering code

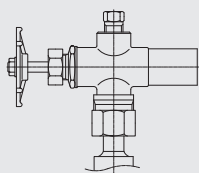
Model : L100 (Reflex type)



Section A'-A''



FLANGE TYPE



SOCKET WELD TYPE

NO.	DESCRIPTION	MATERIAL
1	GAUGE VALVE	A216 WCB/A351 CF8/A351 CF8M
2	VESSEL CONNECTION FLANGE	A105/A182 F304/A182 F316
3	GAUGE CONNECTION	A105/A479 304/A479 316
4	GAUGE BODY	A105/A479 304/A479 316
5	COVER	A105/A479 304/A479 316
6	GLASS	BOLISICATE
7	BOLT	A193 B7/BB
8	DRAIN VALVE	A216 WCB/A351 CF8/A351 CF8M A105/A182 F304/A182 F316
9	PLUG	A105/A479 304/A479 316

Blank memo area for writing.