

Zig-zag type level gauge

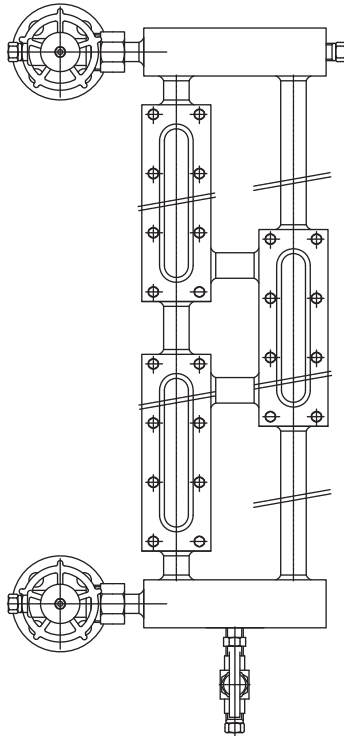
Model : L120 (Reflex type)
L220 (Transparent type)

Spec. sheet no. LD01-03

Description

This level gauge is possible to measure the level point without any dead point between cover & cover, and installed on LPG tank or butan tank.

It's applicable to reflex and transparent type level gauges.



Model : L120 (Reflex type)



Model : L220 (Transparent type)

Specification

Model : L120 (Reflex type)

Material

Carbon steel, Stainless steel

Max. pressure

10 MPa

Vessel connection

1/2", 3/4" and 1"

Model : L220 (Transparent type)

Material

Carbon steel, Stainless steel

Max. pressure

10 MPa

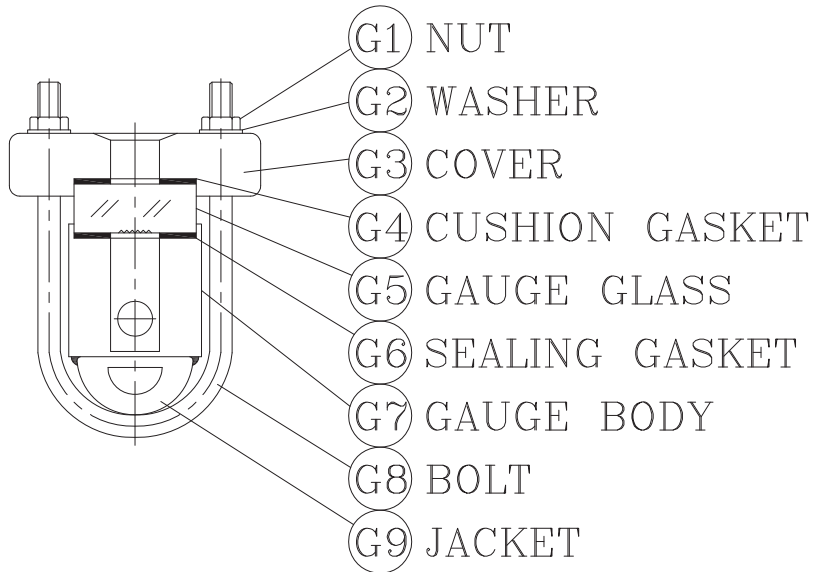
Vessel connection

1/2", 3/4" and 1"

Optional Jacket type level gauge for L100 and L200

Spec. sheet no. LD01-04

Model : L100 (Jacket type)



Model : L200 (Jacket type)

